



Walk to  
**Emmaus**  
FILE UPPER ROOM

# L.O.V.Emmaus Community

Limestone-Ohio Valley Emmaus Community

Summer Issue

L.O.V.E. COMMUNITY NEWS

June, 2009

**While they were talking and discussing, Jesus himself came near and walked with them.**

**Luke 24:15**

### Upcoming Events:

- Gathering June 23  
July 28

**IMPORTANT NOTE:**  
All Community Gatherings are held at 7:00 p.m. at Washington United Methodist Church

*If possible, please bring a snack to share!*

**Board of Directors:**  
6/23/09 at 5:45 pm  
7/28/09 at 5:45 pm

*Carry  
each others'  
Burdens,  
and  
In this way  
you will  
Fulfill  
the Law of  
Christ.*

*Galations 6:2 NIV*

## *From the Ol' Reverend ...*



Getting ready for heaven isn't easy.

There's an old story about two brothers who grew up on a farm near Cairo, Illinois. One brother took to education like a duck to water. He graduated from Georgia Tech and became a renowned engineer in Chicago. The other brother was content to stay home and farm. Some years later the learned brother was invited to give a speech in Atlanta at the Peachtree Plaza Hotel. He had not seen his brother in a long while so he invited him to bring his family to the hotel and spend a little time with him.

The rural brother had never been in a town bigger than Cairo. He and his wife and son piled into their pickup truck and headed for Atlanta. After a fearful experience on the interstate highways, they pulled up in front of the Peachtree Plaza. The farmer left his wife in the truck. He and his son went inside to check in. Just inside the entrance were a number of elevators. The farmer had never seen one before. He watched a large, very plain, middle-aged lady step inside one of those little rooms. The doors closed. After about a minute, the doors opened and out stepped a young lady who was a vision of loveliness. The old fellow's eyes bugged out. Quickly he punched his son and said, "Boy, go get your Maw. I'm gonna run her through that thing one time."

Wouldn't it be wonderful if change came so easily – that somehow we could fall on our knees, give our lives to the Lord, and get up visions of loveliness!? I have good news for you. God has provided those who follow Him with two powerful friends. The Bible tells us at 1 John 2:1 that when we sin we have an Advocate who pleads our case with the Father. He is Jesus Christ, the one who is truly righteous. Jesus tells us that He has given us the Holy Spirit as our Helper. He is the One who gave birth to the Church, the One by whom we are being "born again". Let's resolve that, no matter the difficulty, we will keep on looking to Jesus so that the Lord - who is the Spirit - will make us more and more like Him as we are changed into His glorious image.

DeColores!  
Jim Finch  
Community Spiritual Director

## **SAVE THE DATE!**

Top 10 reasons to attend the annual LOVE Emmaus picnic:

1. Lots of food
2. Catch up with old friends
3. Meet new friends
4. Lots of food
5. Great worship
6. Get rejuvenated, restored, revived and lots of other "re-s"
7. Lots of food
8. Great music
9. Laughter, hugs and love
10. Did I mention lots of food?



So mark your calendars for Tuesday, August 25<sup>th</sup>! You won't want to miss it! Plan to bring the whole family! More details in the next edition and at the gatherings!



## *After the Walk ...*

Now that the spring Walks are over and we have 40 or so new members added to our LOVE Community it is time for the older heads to insure that the needs of our newest members are being met.

If you were a sponsor your work is not done - you should be assisting those you sponsored in finding or starting a share group. You may want to invite them to one of your share group meetings to give them a better idea of what a share group does.

Also, the Community as a whole needs to work at getting the new members involved in Community activities. My share group prepared the Friday evening meal for this past Women's Walk and we invited some of the recent Men's Walk Pilgrims to serve with us. Be creative, but help the newest members feel wanted and needed in our Community - because they are!!!



DeColores!  
Tom Tavis  
Good Shepherd

## **BOUND TOGETHER**

Dear Emmaus Friends,

We wanted to share this poem that has been handed down to us through our family. We feel it speaks so well as to the generous service we have seen in all of you.

*Pray to know your duty,  
And then your duty do;  
Just ask that those who need you  
May place their trust in you;  
Be it your aim to gladden  
Some heart by grief depressed;  
Forget yourself in others,  
And give to God your best.*

Don't forget to keep our past, present, and future Pilgrims in your prayers. The Lord and prayer "binds us together". Think of someone you haven't seen at the gatherings lately, and give them a call, drop them a note, or plan a visit. It may just be the nudge they need to feel missed.

DeColores!

Tim and Sally Teegarden  
Volunteer Chaircouple



## **WOMEN'S WALK #18**

Women's Walk #18 has come and gone, but God did a work in the lives of the 26 pilgrims and the team members that will last a lifetime! He was with us from the time I was asked to be Lay Director, through the team meetings and during the glorious 72 hours we spent at Ruggles. We serve an awesome God! Sure, there were a few difficulties because humans were involved, but God carried us through and we all came out better for having been there!

Thank you to the entire LOVE Community for the prayers and physical presence given to all of us. You are a wonderful example of being Christ's disciples. God loves you and so do I.

DeColores,  
Janice Edingfield  
Lay Director, Women's Walk #18

## ***Anonymous Servanthood***

It was exciting to see the 'Log Room' filled with Community members Thursday evening after the picnic for Women's Walk #18! Members of the LOVE Emmaus Community were busy dropping off letters, table and bed Agape, and offering to help in any way that would make the Emmaus Walk meaningful for the Pilgrims. The Log Room is the staging site for the 'behind the scenes' work for the Emmaus Walk. Personal care items, cleaning supplies, Agape, materials for candlelight, umbrellas, extra blankets and many other needed items (like plenty of tissues) take up residence in the Log Room between Walks and are replenished as needed.

I remember, as a Pilgrim, telling someone that I thought I needed a flashlight and didn't have one with me. I had a flashlight before my head hit the pillow that first night. While I didn't realize it then, God was using others to show His love to me by meeting my perceived need of a flashlight. You know, someone in the Community must have donated extra flashlights (with batteries) to have for such an occasion. To this day, a flashlight is a reminder to me of Agape love.

Anonymous servanthood is a blessing to both the giver and receiver. Helping with logistics before, during, and after a Walk allows God to use you to help others draw closer to Him. You may never know how you have helped someone strengthen their relationship with Christ!

DeColores!  
Dan & Brenda Reed  
Logistics Coordinators



If your outgo exceeds your income, your upkeep will become your downfall.



## Agape Unconditional Love

Once again, the LOVE Emmaus Community out did themselves with Agape for the Spring Men and Women's Walks. The Pilgrims are first surprised, then tickled, then AMAZED by the amount of Agape, the messages in the Agape, and finally the love that is represented in the time and resources someone somewhere put into making the Agape just for them on their Walk. Then, it begins to dawn on them that Agape is also represented in the meals and snacks being cooked and/or served, the buildings and grounds being kept up and cleaned, the cards and notes received, and finally the many visits of the Community over the weekend. When all of these gifts are put in the light of God's love, the Pilgrims have a better understanding of just how amazing His grace is!

Thanks to everyone who played a part in representing God's love to the Pilgrims on the last two Walks. And it is never too early to begin thinking about what you and your share group could do to show God's love to the Pilgrims on the next Walk. Perhaps you could prepare and/or serve a meal, write notes or prepare a craft, or offer to provide a special service during the Walk (please check with the Lay Director, Kitchen Director, and/or Logs for this one!). September will be here before you know it!

Linda Naylor, Agape Chair

## Sharing the L.O.V.E.

The last Walks went great! God blessed us with many Pilgrims, so we had good turn-out for both. I would like to ask for your support, once again, in rounding up more Pilgrims for the fall Walks. We currently have 6 for the Men's Walk and 11 for the Women's Walk.

The Walk to Emmaus is such a wonderful blessing for all who attend. I always enjoy passing along that blessing; I hope you will too. Remember that if they say "no" the first time, they probably mean, "I will consider it". So ask a few more times.

De Colores!  
Michael Starkey  
Sponsorship Chairman

## Kitchens & Cookbooks



Community members,

Again, I want to thank all the people who helped in the kitchen this past Women's Walk - everyone was great and made my job so much easier. I will be in contact with those of you who have indicated you would like to work in the kitchen - hope you will sign up to help on the fall Walks in September and October!

The next event will be a Picnic on Tuesday August 25 out at Ruggles. Plan on bringing your family and a favorite covered dish. Meat, buns, condiments and drinks will be furnished. Come and enjoy the food, fellowship and worship time in the Tabernacle!

Again, thank you all who have helped in the kitchen so far this year - you have been great!

DeColores!  
Kay Grooms, Kitchen Coordinator

## HOW TO PLANT A GARDEN

FIRST, you come to the Garden alone, while the dew is still on the roses ...

Then, for the Garden of your daily living, plant three rows of Peas:

1. Peace of mind
2. Peace of heart
3. Peace of soul

Plant four rows of Squash:

1. Squash gossip
2. Squash indifference
3. Squash grumbling
4. Squash selfishness

Plant four rows of Lettuce:

1. Lettuce be faithful
2. Lettuce be kind
3. Lettuce be patient
4. Lettuce really love one another

No Garden is complete without Turnips:

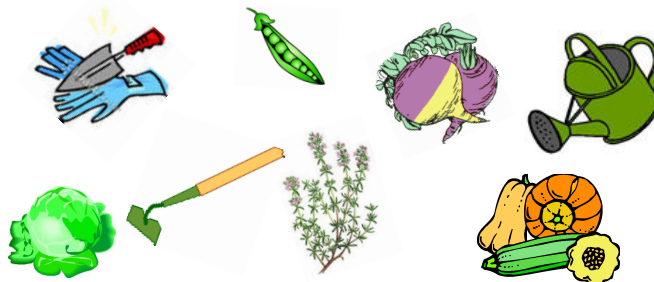
1. Turnip for meetings
2. Turnip for service
3. Turnip to help one another

To conclude our Garden we must have Thyme:

1. Thyme for God
2. Thyme for family
3. Thyme for friends

Water freely with Patience and cultivate with Love. There is much Fruit in your Garden because you reap what you sow.

(Found on the internet)





Walk to  
**Emmaus**  
FILL UPPER ROOM

**L.O.V.Emmaus Community**  
Limestone-Ohio Valley Emmaus Community



## Upcoming Walk Dates Announced!

Men #18: 9/3 – 6, 2009

Women #19: 10/1 – 4, 2009

[www.lovemmas.org](http://www.lovemmas.org)

## L.O.V.E. Community Board of Directors

Community Lay Director . . .	George Smith
Ass't Comm. Lay Director . . .	Alison Dunn
Secretary . . . . .	Bren Frodge
Treasurer . . . . .	David Lewis
Community Spiritual Director	Jim Finch
Music . . . . .	Phil Brown
Worship . . . . .	Janice Edingfield
Good Shepherd . . . . .	Tom Tavis
Agape . . . . .	Linda Naylor
Sponsorship . . . . .	Michael Starkey
Volunteer Coordinators . . . .	Tim & Sally Teegarden
Communications . . . . .	Karen Hughes
Logistics Coordinators . . . .	Dan & Brenda Reed
Social Coordinators . . . . .	R. C. & Shirley Miller
Chrysalis Representative . .	Acynda Spriggs
Registrar / Membership . . . .	Nicole George
Facilities Set-up/Clean-up . .	Bill Shelton
Kitchen . . . . .	Kay Grooms
L.E.A.D. . . . .	Roger Cheesbro
Ruggles Liaison . . . . .	Stella Hull



Walk to  
**Emmaus**  
FILL UPPER ROOM

**L.O.V.E. COMMUNITY**  
P.O. Box 454  
Maysville, KY 41056